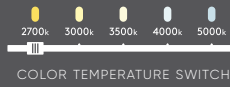


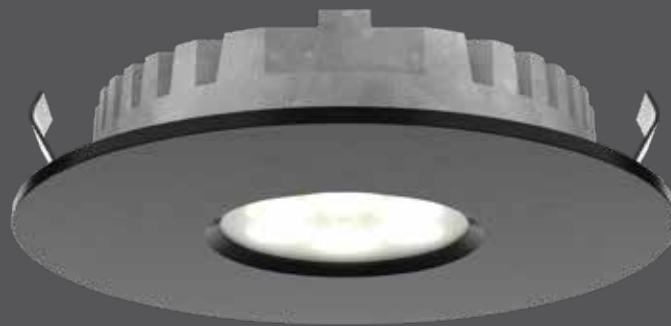
# Super-puck recessed

Enjoy energy-saving white light in a variety of attractive finishes. These LED pucks are well suited to accent and task lighting under cabinets and in other areas.

UPGRADE



COLOR TEMPERATURE SWITCH



Model	Size	Watts	Delivered lumens	CRI	Color °T	Voltage
<b>4001-CC</b>	Ø2.625"	3 W	150 lm	90	2700, 3000, 3500, 4000, 5000 K	12 V

### Specifications

12V DC LED driver required  
 Over 50,000 hours of service life  
 12" input lead with quick connector  
 24" interconnection harness included  
 Switch-selectable CCT: 2700 K/3000 K/  
 3500 K/4000 K/5000 K  
 Superior LED performance and lifespan  
 Smooth 360° wide spread  
 Minimal heat emission  
 Heat sink and thermal protection  
 Steel and aluminum construction  
 Frosted glass lens  
 Refer to website for dimmer compatibility  
 5-year warranty

### Note:

Plug-in or hard-wired power supply required for installation. Sold separately.

Other color °T and finishes available, but may require MOQ's and longer lead times. Please contact your DALs representative for more information.

### Finish

- **BK** Black
- **GD** Gold
- **SN** Satin Nickel
- **WH** White

### Power supplies: plug-in

- ETR-LED10WPI**  
12V DC/10W class 2 LED driver
- ETR-LED24WPI**  
12V DC/24W class 2 LED driver

### Power supplies: hard-wired

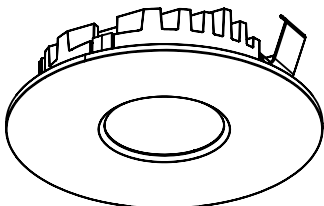
- BT06DIM-IC**  
6W dimmable LED hardwire driver
- BT12DIM-IC**  
12W dimmable LED hardwire driver
- BT24DIM-IC**  
24W dimmable LED hardwire driver
- BT36DIM**  
36W dimmable LED hardwire driver
- BT48DIM**  
48W dimmable LED hardwire driver

### Accessories

- 4000-E24**  
24" extension cord
- 4000-E60**  
60" extension cord
- 4000HRNS-24**  
24" interconnection harness

4001-CC

Ø2.375"



Ø2.625"

