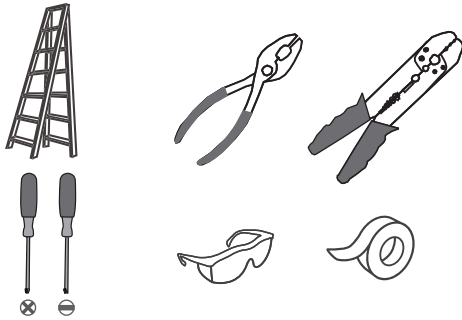
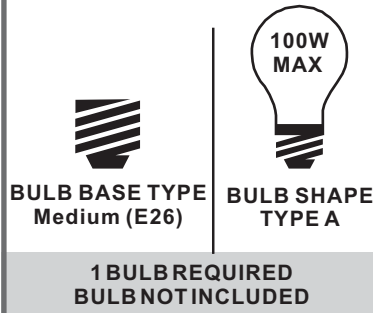


Tools Required



Light Source



**Fixture Height Adjustable
17" to 109"**

⚠ Warnings and Cautions

Turn off the electricity at the circuit breaker before installation. Consult a licensed electrician if in doubt about installation.

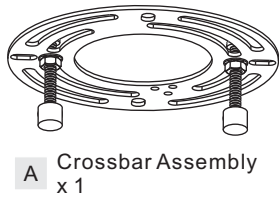
Turn off power to the fixture and allow the bulbs to cool before replacing.

Package Contents

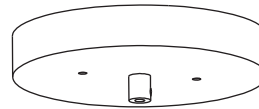
Preparation: Identify and inspect all parts before beginning the installation.

Missing or damaged parts? Contact your original place of purchase.

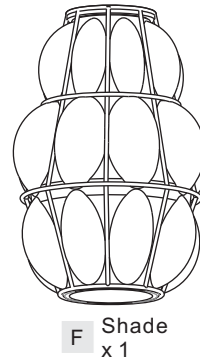
PARTS BAG



- B** Outlet Box Screw x 2
- C** Wire Connector x 3
- D** Safety Clip x 1



E Ceiling Canopy x 1



F Shade x 1

Fixture Body x 1 **G**

Socket Collar [preassembled to fixture body]

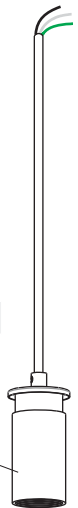
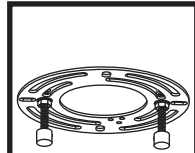


Table of Contents

Crossbar Assembly



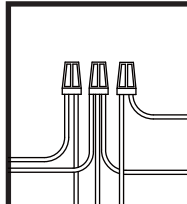
STEP 1

Fixture Body



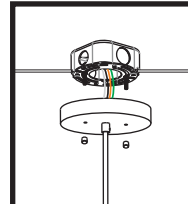
STEP 2

Wiring



STEP 3

Ceiling Canopy



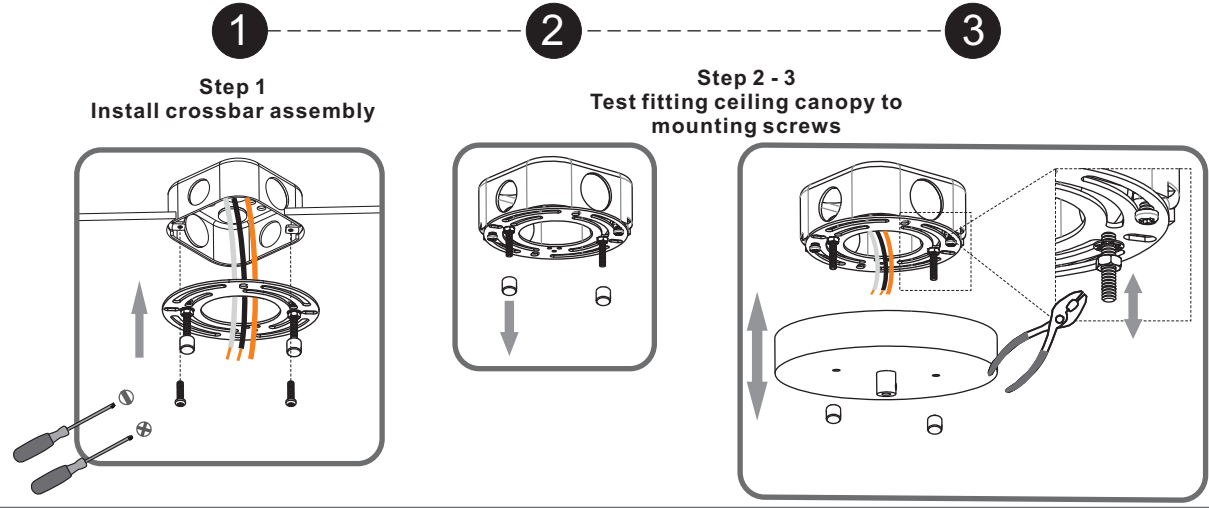
STEP 4

Shade & Bulb

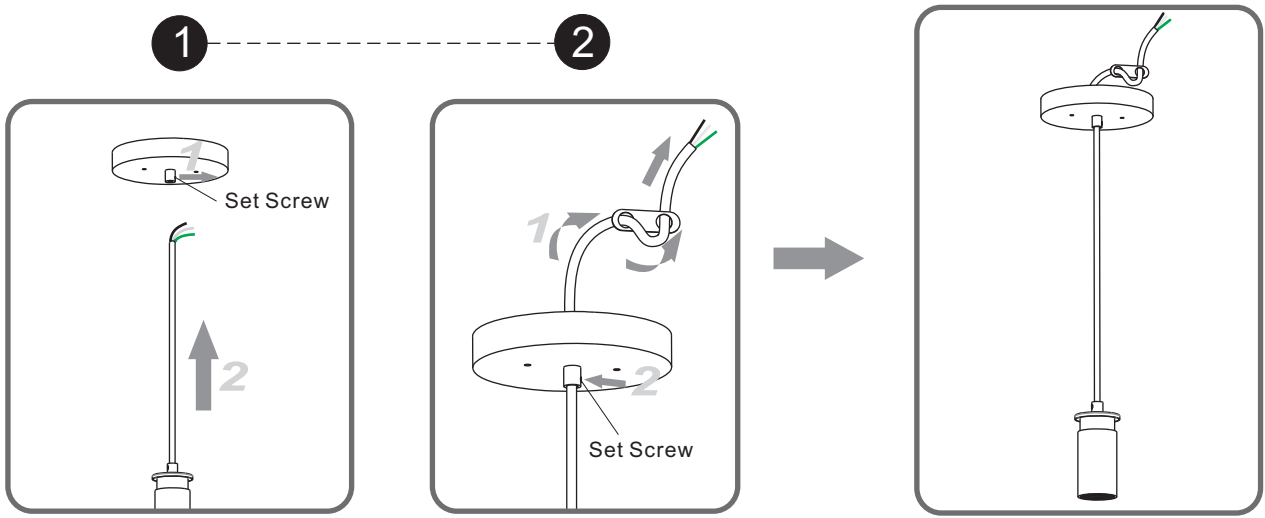


STEP 5

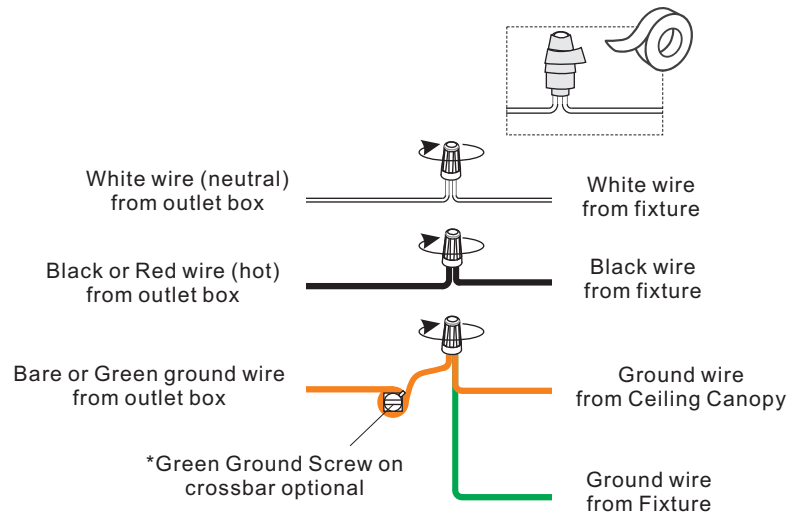
STEP 1



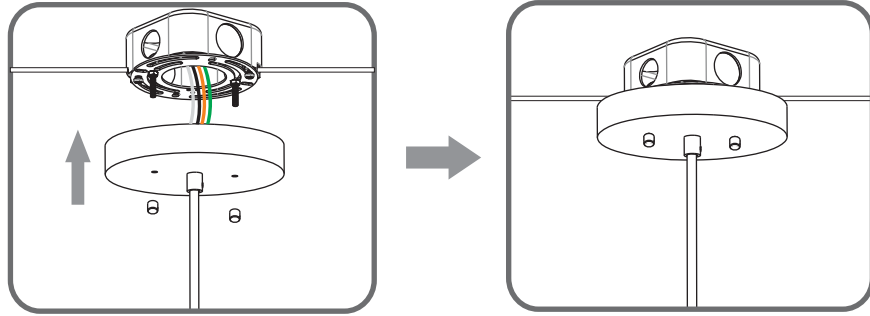
STEP 2



STEP 3



STEP 4



STEP 5

