

# WAC LIGHTING

Fixture Type: \_\_\_\_\_

Catalog Number: \_\_\_\_\_

Project: \_\_\_\_\_

Location: \_\_\_\_\_

## Oculux 3.5"

0° - 35° Adjustable Round

Model	Beam	Color Temp & CRI	Lumens	CBCP	Finish
R3BRA	F 50°	927 2700K - 90	900	1196	BN Brushed Nickel
		930 3000K - 90	970	1285	WT White
	N 25°	927 2700K - 90	915	2513	
		930 3000K - 90	985	2701	
	S 15°	927 2700K - 90	900	4384	
		930 3000K - 90	970	4712	

Example: **R3BRA-F927-BN**

### DESCRIPTION

Oculux 3.5" is an architectural grade recessed downlight available in an IC-Rated Airtight new construction or IC-Rated remodel housing sold separately. Oculux is Energy Star Rated and CEC Title 24 Compliant with Wet Location listing which means it can be installed in a broad range of applications. 35° visual cutoff provides superb glare reduction. Available in round or square open reflector and adjustable trim options.

### FEATURES

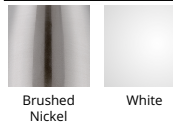
- Shallow housing under 4in depth
- Single spot light source
- 5 year warranty

### SPECIFICATIONS

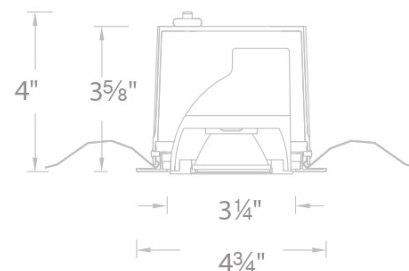
<b>Construction:</b>	Die-cast aluminum trim and heat sink
<b>Power:</b>	11W
<b>Light Source:</b>	Integrated LED 3 Step Mac Adam Ellipse
<b>Rated Life:</b>	50000 Hours
<b>Mounting:</b>	Heavy gauge retention clips support trim firmly
<b>Finish:</b>	Electrostatically Powder Coated White, Electroplated Brushed Nickel
<b>Operating Temp:</b>	-4°F to 104°F (-20°C to 40°C)
<b>Standards:</b>	ETL, cETL, Damp Location Listed, Energy Star 2.0, Title 24 JA8-2016 Compliant



### FINISHES



### LINE DRAWING



# WAC LIGHTING

## Oculux 3.5" Remodel Housing

### Model & Product

R3BBRT-10 Oculux 3.5" LED Remodel IC-Rated Housing

Example: **R3BBRT-10**

### DESCRIPTION

Oculux 3.5" is an architectural grade recessed downlight available in an IC-Rated Airtight new construction or IC-Rated remodel housing sold separately. Oculux is Energy Star Rated and CEC Title 24 Compliant with Wet Location listing which means it can be installed in a broad range of applications. 35° visual cutoff provides superb glare reduction. Available in round or square open reflector and adjustable trim options.

### FEATURES

- Shallow housing under 4in depth
- Driver concealed within the fixture
- 5 year warranty

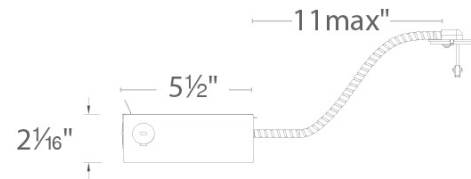
### SPECIFICATIONS

<b>Construction:</b>	20 gauge cold rolled steel wiring box
<b>Power:</b>	11W
<b>Input:</b>	120 VAC, 50/60Hz
<b>Dimming:</b>	TRIAC: 100-5%, ELV: 100-5%, 0-10V: 100-5%
<b>Rated Life:</b>	50000 Hours
<b>Mounting:</b>	Heavy gauge retention clips secures housing firmly to ceiling
<b>Cut Out:</b>	4 1/4"
<b>Finish:</b>	
<b>Ceiling Thickness:</b>	1/2" - 1"
<b>Operating Temp:</b>	-4°F to 104°F (-20°C to 40°C)
<b>Standards:</b>	ETL, cETL, IC, Airtight

Fixture Type: \_\_\_\_\_  
Catalog Number: \_\_\_\_\_  
Project: \_\_\_\_\_  
Location: \_\_\_\_\_



### LINE DRAWING



Fixture Type: \_\_\_\_\_

Catalog Number: \_\_\_\_\_

Project: \_\_\_\_\_

Location: \_\_\_\_\_

## Oculux 3.5"

### New Construction Housing

#### Model

**R3BNICA-10** Oculux 3.5" LED New Construction IC-Rated Airtight Housing (120V)

**R3BNICA-10U-EM** Oculux 3.5" LED New Construction IC-Rated Airtight Housing (120-277V)

**R3BNICA-10U** Oculux 3.5" LED New Construction IC-Rated Airtight Housing (120-277V)

#### DESCRIPTION

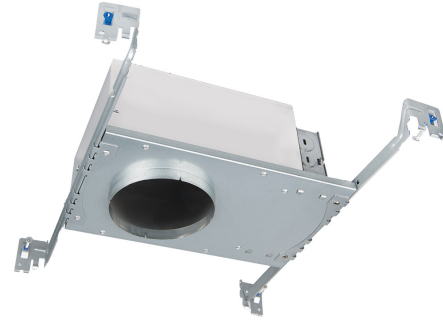
Oculux 3.5" is an architectural grade recessed downlight available in an IC-Rated Airtight new construction or IC-Rated remodel housing sold separately. Oculux is Energy Star Rated and CEC Title 24 Compliant with Wet Location listing which means it can be installed in a broad range of applications. 35° visual cutoff provides superb glare reduction. Available in round or square open reflector and adjustable trim options.

#### FEATURES

- Shallow housing under 4in depth
- Driver concealed within the fixture
- 5 year warranty

#### SPECIFICATIONS

<b>Construction:</b>	20 gauge cold rolled steel wiring box
<b>Power:</b>	11W
<b>Input:</b>	120 VAC, 120-277 VAC, 50/60Hz
<b>Dimming:</b>	TRIAC: 100-5%, ELV: 100-5%, 0-10V: 100-5%
<b>Rated Life:</b>	50000 Hours
<b>Mounting:</b>	Heavy gauge retention clips secures housing firmly to ceiling
<b>Cut Out:</b>	4 1/4"
<b>Finish:</b>	
<b>Ceiling Thickness:</b>	1/2" - 1"
<b>Operating Temp:</b>	-4°F to 104°F (-20°C to 40°C)
<b>Standards:</b>	ETL, cETL, IC, Airtight



#### LINE DRAWING

