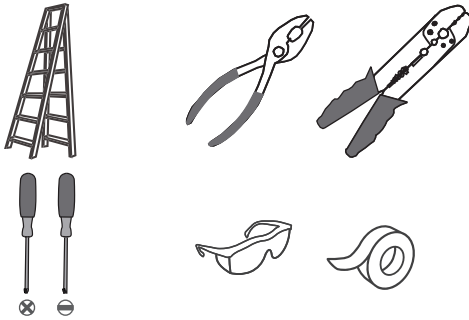
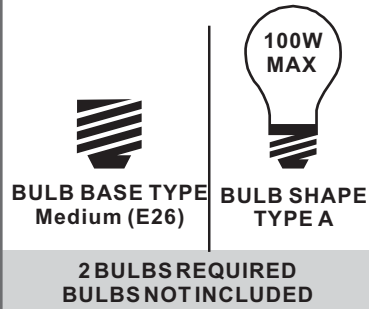


Tools Required



Light Source



Warnings and Cautions

Turn off the electricity at the circuit breaker before installation. Consult a licensed electrician if in doubt about installation.

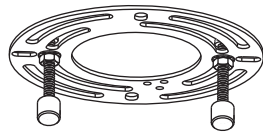
Turn off power to the fixture and allow the bulbs to cool before replacing.

Package Contents

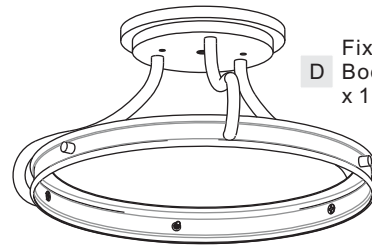
Preparation: Identify and inspect all parts before beginning the installation.

Missing or damaged parts? Contact your original place of purchase.

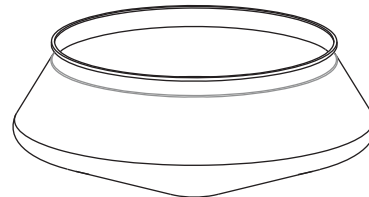
PARTS BAG



- A** Crossbar Assembly x 1
- B** Outlet Box Screw x 2
- C** Wire Connector x 3



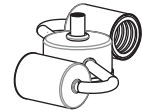
D Fixture Body x 1



E Shade x 1



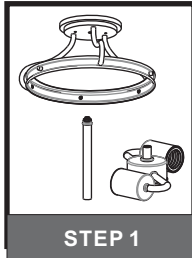
F Stem Assembly x 1



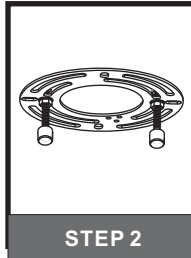
G Socket Assembly x 1

Table of Contents

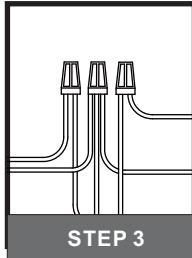
Socket Assembly, Stem Assembly & Fixture Body



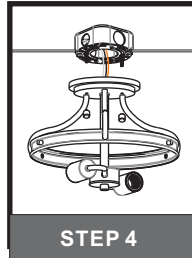
Crossbar Assembly



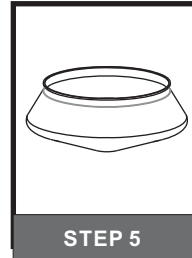
Wiring



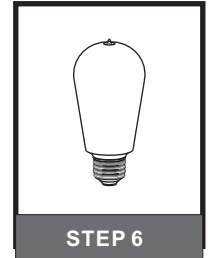
Fixture Body



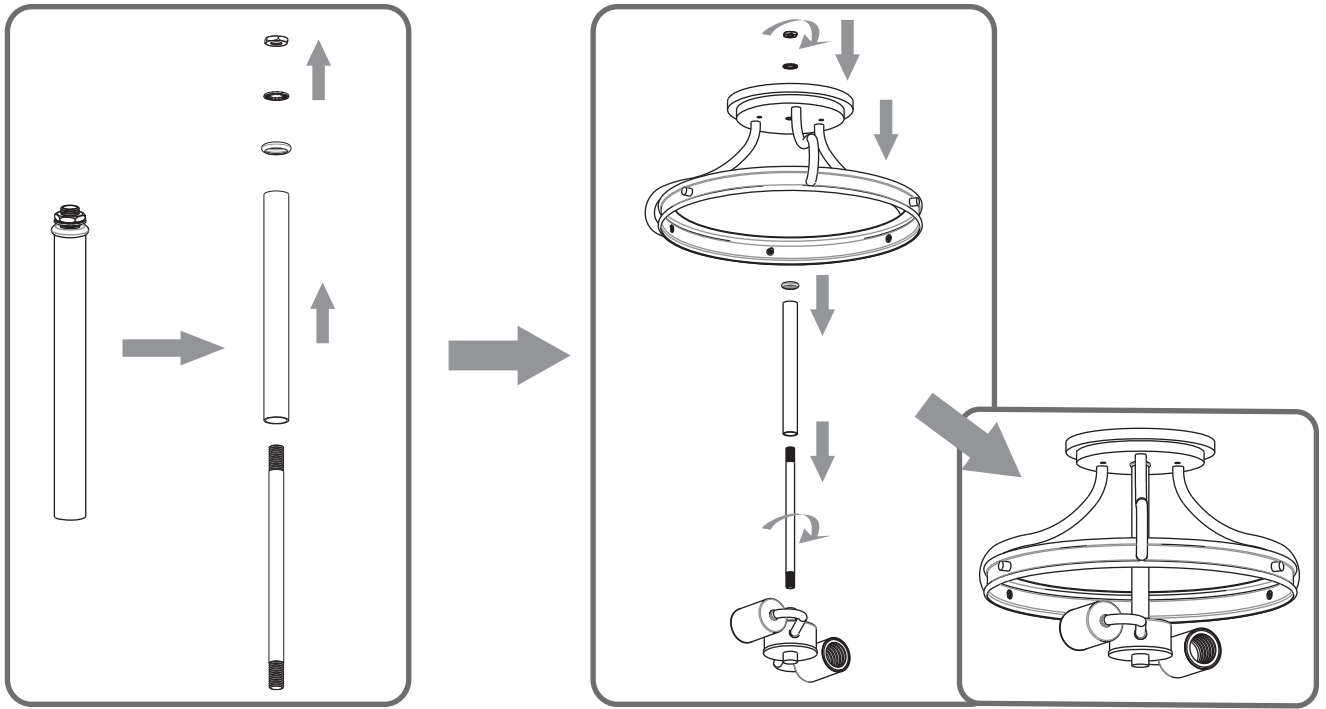
Shade



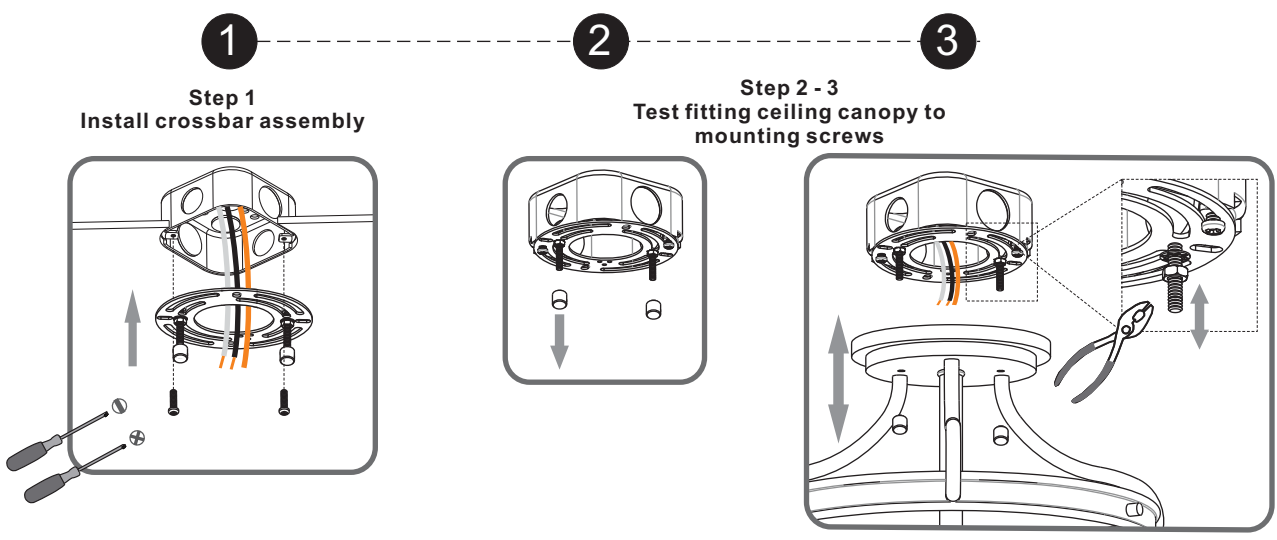
Bulbs



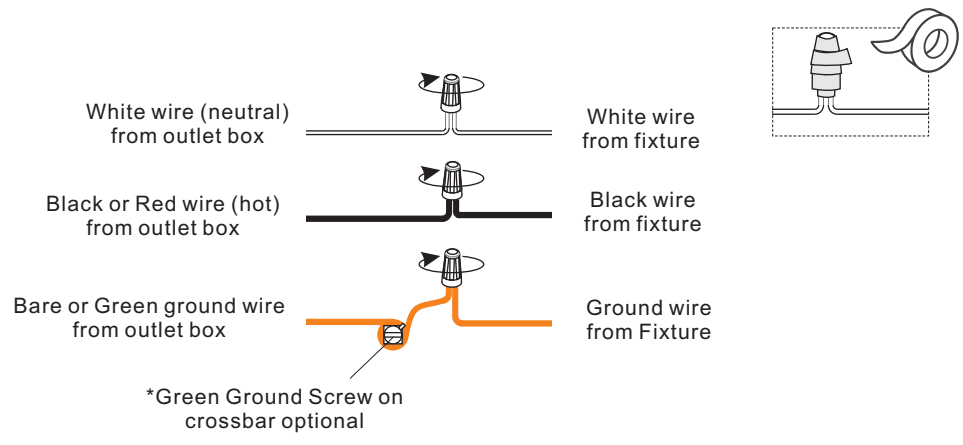
STEP 1



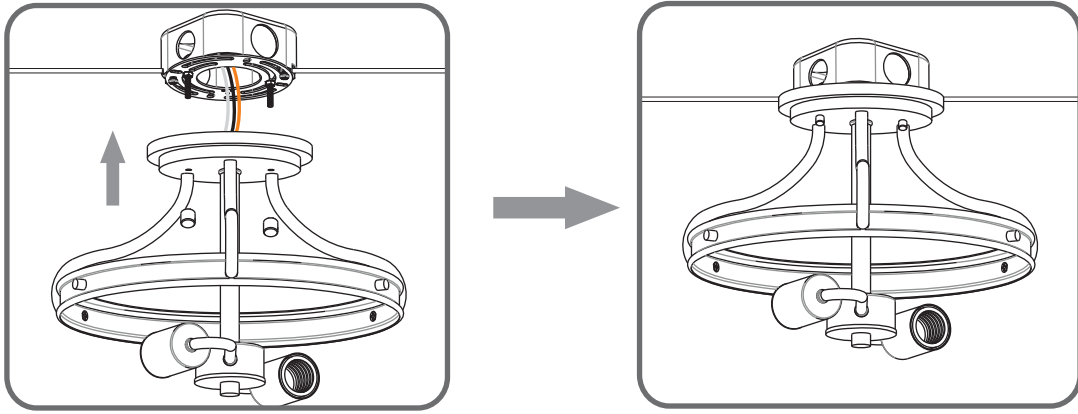
STEP 2



STEP 3



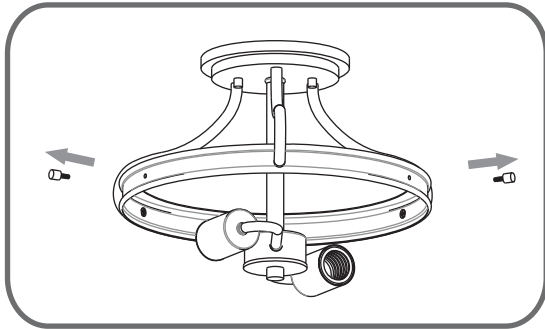
STEP 4



STEP 5

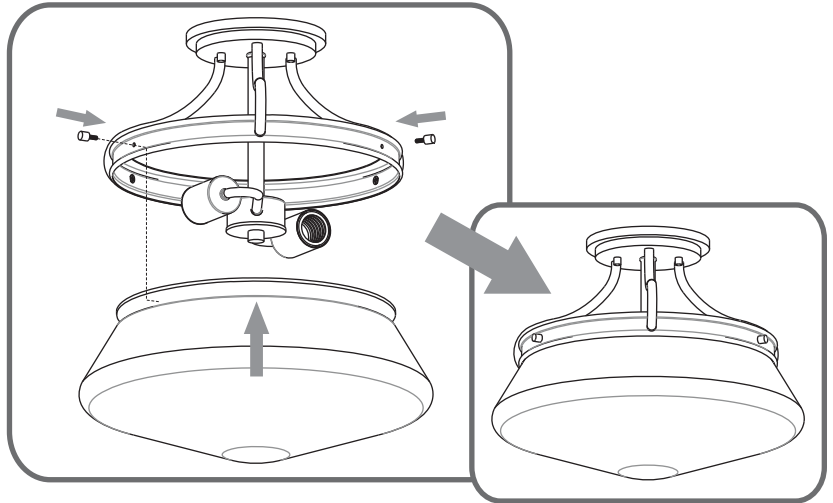
1

Remove Lock Screws



2

Install Shade



STEP 6

