

Linear Vanity

 Wall mounted • Dry location listed 

Description:

A tubular design pairs with a geometric back plate and mesh accents to create Truss - a fixture than can be mounted horizontally or vertically. Circular etched opal glass contains an integrated LED source to provide a variety of energy and cost savings benefits for the homeowner. Modern style and continuous illumination are ideal for a variety of bath and vanity settings. LED source features 3000K and 90+ CRI benefits, as well as a lifespan of more than 42,000 hours.

Specifications:

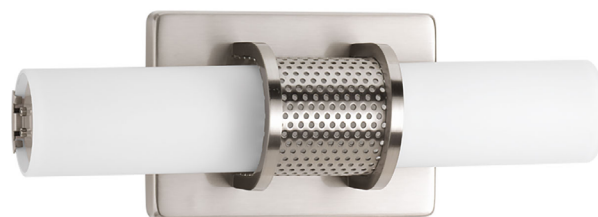
- Brushed Nickel (-09) (plated)
- Steel Construction
- Etched White glass diffuser
- Tubular design pairs with a geometric back plate and mesh accents.
- Can be mounted horizontally or vertically.
- Circular etched opal glass contains an integrated LED source.
- 665 lumens 30 lumens/watt (delivered).
- Dimmable to 10% brightness (See Dimming Notes)
- Back plate covers a standard 4" octagonal recessed outlet box
- Mounting bracket for outlet box included
- 6" of wire supplied
- Complies with "Americans with Disabilities Act" - ADA

Performance:

Number of Modules	1
Input Power	20w
Input Voltage	120 V
Input Frequency	60 Hz
Lumens/LPW (Delivered)	665/30.2 (LM-79)
CCT	3000 K
CRI	93
Life (hours)	42,000 (L70/TM-21)
FCC	Meets FCC Title 47, Part 15 Class B
Min. Start Temp	-30 °C
Max. Operating Temp	30 °C
Warranty	5 year warranty
Labels	cETLus Dry location listed

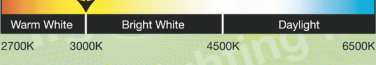
P2834-0930K9

Images:



Dimensions:

Width: 13"
 Depth: 3-7/8"
 Height: 4-3/4"
 H/CTR: 2-3/8" (mounted horizontal)

LED lighting facts [®]		Progress Lighting
A Program of the U.S. DOE		
Light Output (Lumens)	665	
Watts	22	
Lumens per Watt (Efficacy)	30.23	
Color Accuracy	90	
Color Rendering Index (CRI)		
Light Color	3000 (Bright White)	
Correlated Color Temperature (CCT)		
		
2700K	3000K	4500K 6500K
<small>All results are according to IESNA LM-79-2008: Approved Method for the Electrical and Photometric Testing of Solid-State Lighting. The U.S. Department of Energy (DOE) verifies product test data and results.</small>		
<small>Visit www.lightingfacts.com for the Label Reference Guide.</small>		
<small>Registration Number: TH84-UV717D (5/4/2016)</small>		
<small>Model Number: P2834-0930K9</small>		
<small>Type: Luminaire - Decorative</small>		

P2834-0930K9**Dimming Notes:**

P2834 is designed to be compatible with many ELV/Reverse Phase controls.

The following is a partial list of known compatible dimmer controls.

Dimming Controls

Lutron Diva DVELV-300P

Lutron Nova T NTELV-300

Lutron Diva DVELV-300P

Lutron Caseta

Lutron Ariadni AY-600P

Leviton Illumatech IPI06-1LZ

Lutron Lumea LG-603PG

Leviton SureSlide 6672

Leviton SureSlide 6674

Lutron Ariadni AYCL-153P

Lutron Skylark Contour CTCL-153P

Lutron Diva DVCL-153P

Pass & Seymour Harmony DCL453PTCCCV6

Lutron Toggler TGCL-153P

Lutron Maestro MACL-153M

Lutron Ariadni AYL-600P

Lutron Maestro MA-600

Lutron NOVA T NTLV-600

lutron Maestro MAELV-600

Lutron spacer/system SPSELV-600

Lutron Renoir II AWRMG-EAW

Dimming capabilities will vary depending on the dimmer control, load, and circuit installation. Always refer to dimmer manufacturer instructions or a controls specialist for specific requirements.

Dimmer control brand names where identified above are trade names or registered trademarks of each respective company.