

# WAC LIGHTING

Fixture Type: \_\_\_\_\_

Catalog Number: \_\_\_\_\_

Project: \_\_\_\_\_

Location: \_\_\_\_\_

## Oculux 1" 8W Open Reflector Square

Model	Beam	Color Temp & CRI		Lumens	CBCP	Finish
R1BSD-08	F 45°	927	2700K - 90	530	830	BN Brushed Nickel
		930	3000K - 90	575	897	HZWT Haze/White
		927	2700K - 90	615	2211	WT White
	N 25°	927	2700K - 90	615	2211	WT White
		930	3000K - 90	665	2390	

Example: **R1BSD-08-F927-BN**

### DESCRIPTION

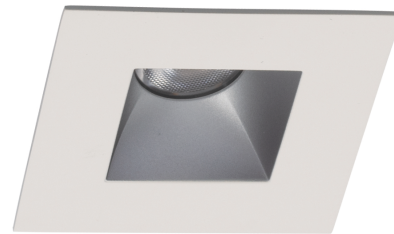
Oculux 1" is an architectural grade recessed downlight with trim, LED light engine, and configurable housing ready to install as an IC-Rated New Construction or Remodel all-in-one unit. Oculux is Energy Star Rated and CEC Title 24 Compliant with Wet Location listing which means it can be installed in a broad range of applications. 35° visual cutoff provides superb glare reduction. Available in Round or Square open reflector and adjustable trim options.

### FEATURES

- Cutout 2 1/2"
- Single spot light source
- Ceiling thickness: 1/2" - 1"
- Sold as New Construction, may be reconfigured in the field for Remodel
- Driver concealed within the fixture
- 5 year warranty

### SPECIFICATIONS

<b>Construction:</b>	Die-cast aluminum trim with aluminum heat sink
<b>Power:</b>	7.5W
<b>Input:</b>	120 VAC, 50/60Hz
<b>Dimming:</b>	TRIAC: 100-5%, ELV: 100-5%
<b>Light Source:</b>	Integrated LED 3 Step Mac Adam Ellipse
<b>Rated Life:</b>	50000 Hours
<b>Cut Out:</b>	2 1/2"
<b>Finish:</b>	Electrostatically Powder Coated Haze/White, White, Electroplated Brushed Nickel
<b>Ceiling Thickness:</b>	1/2" - 1"
<b>Operating Temp:</b>	-4°F to 104°F (-20°C to 40°C)
<b>Standards:</b>	ETL, cETL, Wet Location Listed, Energy Star 2.0, Title 24 JA8-2016 Compliant, IC, Airtight



### FINISHES



### LINE DRAWING

