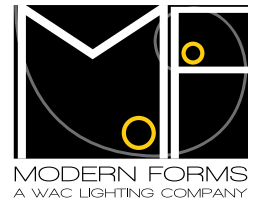
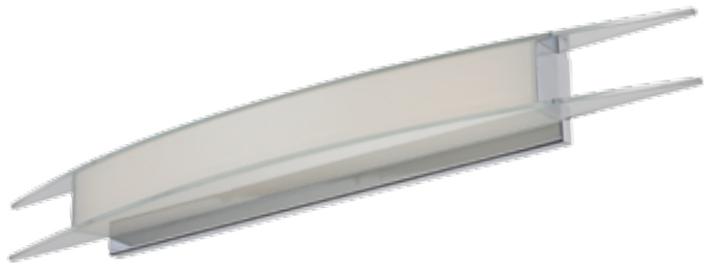


ARC- model: WS-33

LED Vanity/Sconce Luminaire



shown with optional metal light shield

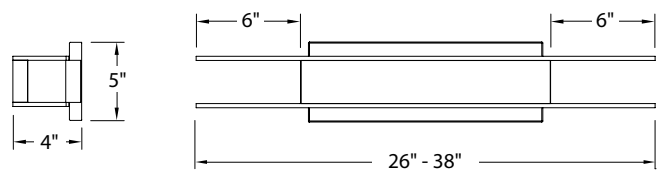


Fixture Type:

Catalog Number:

Project: _____

Location: _____



PRODUCT DESCRIPTION

On the cutting edge of fine bath lighting, Arc embodies unique contemporary styling. Illuminating from three sides for maximum functional light output as a both vanity, or using the included chrome shield option to transition it into a chic powder room or home theater sconce.

FEATURES

- ETL & cETL listed for damp locations
- Mount vertically or horizontally
- Optional chrome metal light shield included
- Low profile design
- Replaceable LED modules
- 70,000 hour potential life
- 5 year WAC Lighting product warranty
- 120° beam angle
- **Color Temp: 3000K**
- **CRI: 90**

SPECIFICATIONS

Construction: Aluminum with clear and silk screened glass.

Power: Transformer located in outlet box. 120V input.

Light Source: High output LED.

Dimming: Dims to 10% with an electronic low voltage (ELV) dimmer.

Mounting: Mounts directly to junction box.

Finish: Chrome (CH).

Standards: ETL & cETL listed. ADA compliant.

Installation: Requires Transformer to be recessed within the junction box.

FIXTURE PERFORMANCE

Model	Watt	# of LEDs	LED Lumens	Photometric Lumens w/o shield
WS-3326	22W	48	1250	760
WS-3338	38W	96	2500	1440

Photometric Lumens w/shield
490
845

ORDER NUMBER

Model	Length	Finish
WS-33	26 26"	CH Chrome
	38 38"	



Example: **WS-3326-CH**

REPLACEMENT GLASS

Model	Fixture
RPL-GLA-3326	WS-3326
RPL-GLA-3338	WS-3338

REPLACEMENT METAL PLATE

RPL-PLA-3326-CH	WS-3326
RPL-PLA-3338-CH	WS-3338

Modern Forms – A WAC Lighting Company
 www.modernforms.com
 Phone (800) 526.2588 • Fax (800) 526.2585

Headquarters/Eastern Distribution Center
 44 Harbor Park Drive • Port Washington, NY 11050
 Phone (516) 515.5000 • Fax (516) 515.5050

Western Distribution Center
 1750 Archibald Avenue • Ontario, CA 91760
 Phone (800) 526.2588 • Fax (800) 526.2585